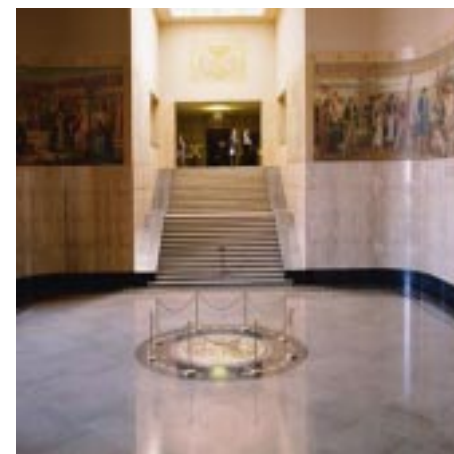


Conventional System

(175-300 rpm machine)



A CONVENTIONAL SYSTEM produces a floor protection that is easy to apply and less time consuming. Great for floors where maintenance is done infrequently and the area to be finished is smaller. The equipment required for convention systems is generally less expensive and relative easy to use.



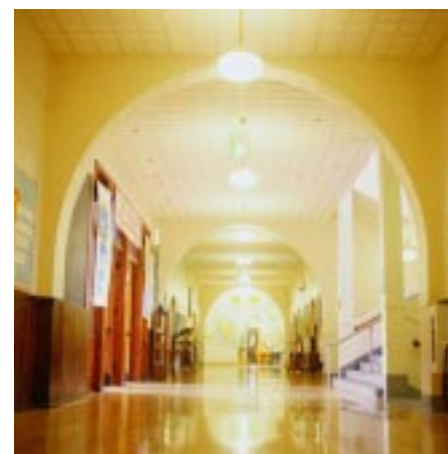
APPLICATION	PRODUCT AND DESCRIPTION	ITEM #	PACKAGE SIZE
Floor Finish	STYLE - A specialty formulated, tough, acrylic polymer sealer/finish that delivers a high initial gloss and superior durability. Holds up in high traffic areas, extending the strip-and-recoat cycle. Excellent in no maintenance floor finish programs.	CS0656004	4x1 gal.
		CS0656005	5 gal. pail
		CS0656055	55 gal. drum
Stripper	RELEASE - An aggressive, liquefying, no-scrub stripper used for quick and complete removal of metal cross-linked floor finishes. Labor saving, perfect for difficult stripouts. Recommended for routine stripping.	R3025004	4x1 gal.
		R3025005	5 gal. pail
		R3025055	55 gal. drum
Finish Enhancer	MAINTAIN (optional) Use routinely between strippings to clean and upgrade the gloss on a properly finished floor.	CS0725012	12x32 oz.
		CS0725004	4x1 gal.
		CS0725005	5 gal. pail
Cleaner	AP-7 - No rinse, lemon-scented, neutral cleaner formulated to lift and suspend soil for easy removal while restoring the original high gloss.	P2666004	4x1 gal.
		P2666005	5 gal. pail
		P2666055	55 gal. drum
Sealer	SUPER SEALER - Increases depth of gloss and provides for a longer wearing floor finish.	CS0700004	4x1 gal.
		CS0700005	5 gal. pail
		CS0700055	55 gal. drum

High Speed System

(1,000-1,500 rpm machine)



A HIGH SPEED SYSTEM is effective for medium size areas with a minimum amount of maintenance, approximately 1-3 times per week. The traffic in these areas is generally low and the floors retain most of their gloss throughout the day.



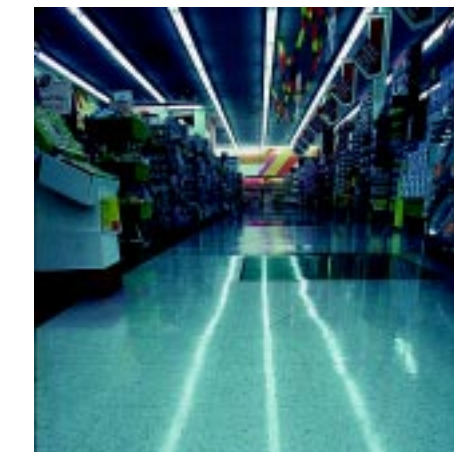
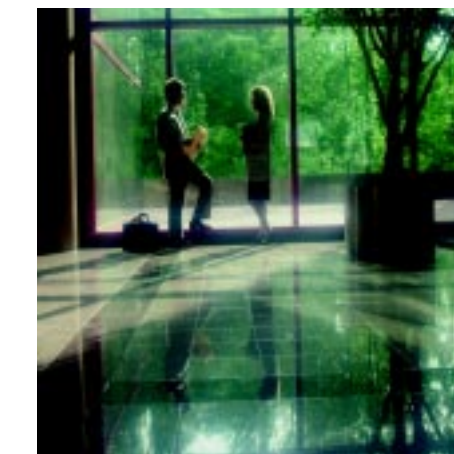
APPLICATION	PRODUCT AND DESCRIPTION	ITEM #	PACKAGE SIZE
Floor Finish	PREMIER PLUS - A tough, long lasting metal cross-linked floor finish. Easy to apply and durable under the heaviest traffic. Formulated for easy maintenance and high gloss. Requires minimal daily maintenance - 1 to 2 times per week.	CS0653004	4x1 gal.
		CS0653005	5 gal. pail
		CS0653055	55 gal. drum
Stripper	EZ-2000 -for spray buffing, burnishing or when excessive buildup is present.	E1100004	4x1 gal.
		E1100005	5 gal. pail
		E1100055	55 gal. drum
Finish Enhancer	REBOUND (optional) - Used routinely between strippings to clean and upgrade the gloss on a properly finished floor.	R3031004	4x1 gal.
		R3031005	5 gal. pail
		R3031055	55 gal. drum
Cleaner	AP-7 - No rinse, lemon-scented, neutral cleaner formulated to lift and suspend soil for easy removal while restoring the original high gloss.	P2666004	4x1 gal.
		P2666005	5 gal. pail
		P2666055	55 gal. drum
Sealer	SUPER SEALER - Increases depth of gloss and provides for a longer wearing floor finish.	CS0700004	4x1 gal.
		CS0700005	5 gal. pail
		CS0700055	55 gal. drum

Ultra High Speed System

(1,500 rpm machine and above)



A ULTRA HIGH SPEED SYSTEM produces the best and most durable floors and requires the most maintenance. This system is traditionally used where the floors are subjected to heavy traffic, but with frequent burnishing, are returned to their original gloss.



APPLICATION	PRODUCT AND DESCRIPTION	ITEM #	PACKAGE SIZE
Floor Finish	WET LOOK PLUS - A high solids, acrylic finish. Leaves floors with a durable, high gloss and long-lasting protection. Medium maintenance - 1 to 4 times per week UHS burnishing.	CS0750004	4x1 gal.
		CS0750005	5 gal. pail
		CS0750055	55 gal. drum
Stripper	SHOW OFF PLUS - A highly responsive, metal interlocked finish which yields the ultimate of a "wet look appearance". High Maintenance - 4+ times per week UHS burnishing.	CS0678004	4x1 gal.
		CS0678005	5 gal. pail
		CS0678055	55 gal. drum
Stripper	TAKE AWAY - No-scrub butyl stripper that quickly liquefies finish for easy removal. Can be used with a floor machine for quick removal of problem buildups.	T3770004	4x1 gal.
		T3770005	5 gal. pail
		T3770055	55 gal. drum
Maintainer	RESPOND - A highly dilutable R3035 cleaner/spray. Eliminates the need to clean with a neutral cleaner prior to UHS buffing. Removes black heel marks, scuffs and scratches while returning the finish to its original gloss.	R3035004	4x1 gal.
		R3035005	5 gal. pail
		R3035055	55 gal. drum
Sealer	SUPER SEALER - (For best results) Improves leveling of old or porous floors to increase depth of gloss and provides for a longer wearing finish.	CS0700004	4x1 gal.
		CS0700005	5 gal. pail
		CS0700055	55 gal. drum

High Solids System

(XXXXXXX rpm machine)



A HIGH SOLIDS - REDUCED LABOR SYSTEM produces the best an exceptional protective gloss with less coats of finish. They can be maintained with any type of machinery and with minimal effort. Less coats equate to less labor.



APPLICATION	PRODUCT AND DESCRIPTION	ITEM #	PACKAGE SIZE
Floor Finish	ULTRA LINE 33 - A high solids, patented specialty polymer for floor finish applications, requiring fewer coats than conventional products, significantly reducing labor cost. Low sensitivity to humidity, low foam, excellent dry-brite glass retention, durability, scuff and scratch resistance and gloss build.	UL070004	4x1 gal.
		UL070005	5 gal. pail
		UL070055	55 gal. drum
Stripper	STRIPS AWAY - A high solids, fast acting stripper. Quickly softens and liquefies old finish for fast and easy removal.	S3492004 S3492005 S3492055	4x1 gal. 5 gal. pail 55 gal. drum
Finish Enhancer	REBOUND (optional) - Used routinely between strippings to clean and upgrade the gloss on a properly finished floor.	R3031004 R3031005 R3031055	4x1 gal. 5 gal. pail 55 gal. drum
Cleaner	AP-7 - No rinse, lemon-scented, neutral cleaner formulated to lift and suspend soil for easy removal while restoring the original high gloss.	P2666004 P2666005 P2666055	4x1 gal. 5 gal. pail 55 gal. drum
Maintainer	RESPOND - A highly dilutable R3035 cleaner/spray. Eliminates the need to clean with a neutral cleaner prior to UHS buffing. Removes black heel marks, scuffs and scratches while returning the finish to its original gloss.	R3035004 R3035005 R3035055	4x1 gal. 5 gal. pail 55 gal. drum

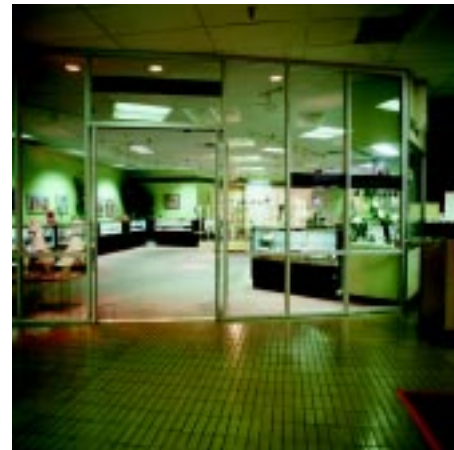
SPECIALTY FLOORS

Terrazzo / Quarry Tile / Concrete / Stone Floors



Terrazzo, Concrete and other natural stone floors require special attention as they generally appear in areas where traffic patterns are demanding. The secret to a successful program for hard floors lies in the sealer.

Hard floors consist of: **POURED FLOORS** such as Terrazzo and Concrete; **STONE FLOORS** such as Quarry Tile, Slate, Brick and Granite; and **CLAY FLOORS** such as Brick Paver, Mexican Tile and Ceramics. These floors may be glazed or ground polished.



APPLICATION	PRODUCT AND DESCRIPTION	ITEM #	PACKAGE SIZE
Sealer	URA SEAL - Urethane fortified, penetrating floor sealer formulated for porous surfaces. Fortified with ingredients to ensure proper adhesion. To obtain a higher gloss, topcoat with TERRA BRITE PLUS .	CS0710004	4x1 gal.
		CS0710005	5 gal. pail
		CS0710055	55 gal. drum
Sealer/Finish	TERRA BRITE PLUS - A superior quality sealer/finish formulated to seal and protect Terrazzo, Quarry Tile and other stone flooring. Offering excellent gloss and durability and can be maintained with any speed floor machine.	CS0825004 CS0825005 CS0825055	4x1 gal. 5 gal. pail 55 gal. drum
Cleaner	QUARRY TILE CLEANER - A lemon-scented cleaner that emulsifies and lifts dirt from tile and grout line on contact. It penetrates cracks and pores to make soil removal complete. (Not recommended for marble floors.)	PS2195004 PS2195005 PS2195055	4x1 gal. 5 gal. pails 55 gal. drum



201 Boston Turnpike, Bolton, CT 06043
1-800-227-5536
FAX: (860) 645-6070
www.simonizusa.com



Floor Care Systems

- CONVENTIONAL
- HIGH SPEED
- ULTRA HIGH SPEED
- HIGH SOLIDS-REDUCED LABOR